

EEYOU PLANNING COMMISSION

PLANNING LAND AND RESOURCE USE
IN EEYOU ISTCHEE



GRAND COUNCIL OF THE CREES (Ei)/
CREE NATION GOVERNMENT
ANNUAL GENERAL ASSEMBLY
MISTISSINI, AUGUST 9, 2018



PRESENTATION CONTENT



1.0
ABOUT THE EYOU PLANNING
COMMISSION (EPC)



2.0
ABOUT REGIONAL LAND AND
RESOURCE USE PLANNING



3.0
MAIN WORK SO FAR



4.0
NEXT STEPS FOR 2018-2019

ABOUT THE EYYOU PLANNING COMMISSION

1.1 MAIN MANDATES OF THE EPC



Building a **collective Cree vision** for land and resource use for all of Eeyou Istchee

Drafting a **regional land and resource use plan** for category II lands

Collaborating with regional planning partners to harmonize different land use plans throughout Eeyou Istchee



ABOUT THE EYOU PLANNING COMMISSION

1.2 THE COMMISSIONERS



- » Chaired by Deputy Grand Chief Mandy Gull
- » Composed of commissioners appointed by each of the Cree First Nations:

Waskaganish



**Barbara
Hester**

Eastmain



**Raymond
Shanoush**

Wemindji



**Elmer
Georgekish**

Chisasibi



**L. George
Pachanos**

Whapmagoostui



**Eddie
Masty**

Washaw Sibi



**Billy
Katapatuk Sr.**

Waswanipi



**Steven
Blacksmith**

Nemaska



**Matthew
Tanoush**

Ouje-Bougoumou



**Norman
Wapachee**

Mistissini



**Hubert
Petawabano**

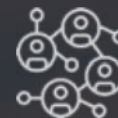


ABOUT THE EYOU PLANNING COMMISSION

1.3 ROLES OF THE COMMISSIONERS



Ensuring effective **communication with the Cree First Nation Councils**



Inform and consult **community members** on land use planning activities



Ensure that planning objectives and outputs are **grounded in the vision of the Cree people**



Help build **community-level capacity to engage** in land use planning and lands management



ABOUT THE EYOU PLANNING COMMISSION

1.4 SECRETARIAT TEAM



- » The Cree Nation Government's **Land Use Planning team** (Department of Environment and Remedial Works) serve as the **EPC Secretariat staff**
- » The team **provides technical expertise and operational support** for the EPC



**Christopher
Beck**
Coordinator of
Land Use Planning



**Merlin
Whiskeychan**
Land Use Planning
Officer



**Sarah-Anne
Brochu-Hébert**
Land Use Planner



**Jessica
Labrecque**
Land Use Researcher
(currently on leave)



ABOUT REGIONAL LAND AND RESOURCE USE PLANNING

2.1 WHAT IS IT?



Builds upon and compliments the special regime established by the *James Bay and Northern Québec Agreement* (1975)

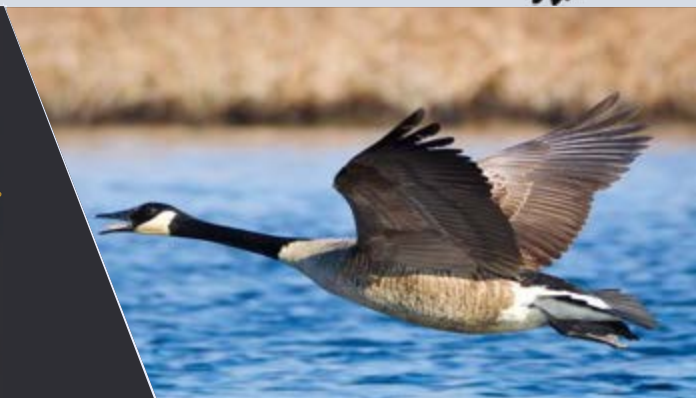


Lands planning and management powers and responsibilities flow from the *Cree-Québec Governance Agreement* (2012)

Ensures **Cree involvement** in the planning and management of Eeyou Istchee



Takes into account the social, cultural, environmental and economic interests of all



ABOUT REGIONAL LAND AND RESOURCE USE PLANNING

2.2 WHY IS IT IMPORTANT?



Building a common vision for the future of Eeyou Istchee



Voicing your concerns for your land



Protecting the land, wildlife and the Cree Way of Life (Eeyou Eetun)

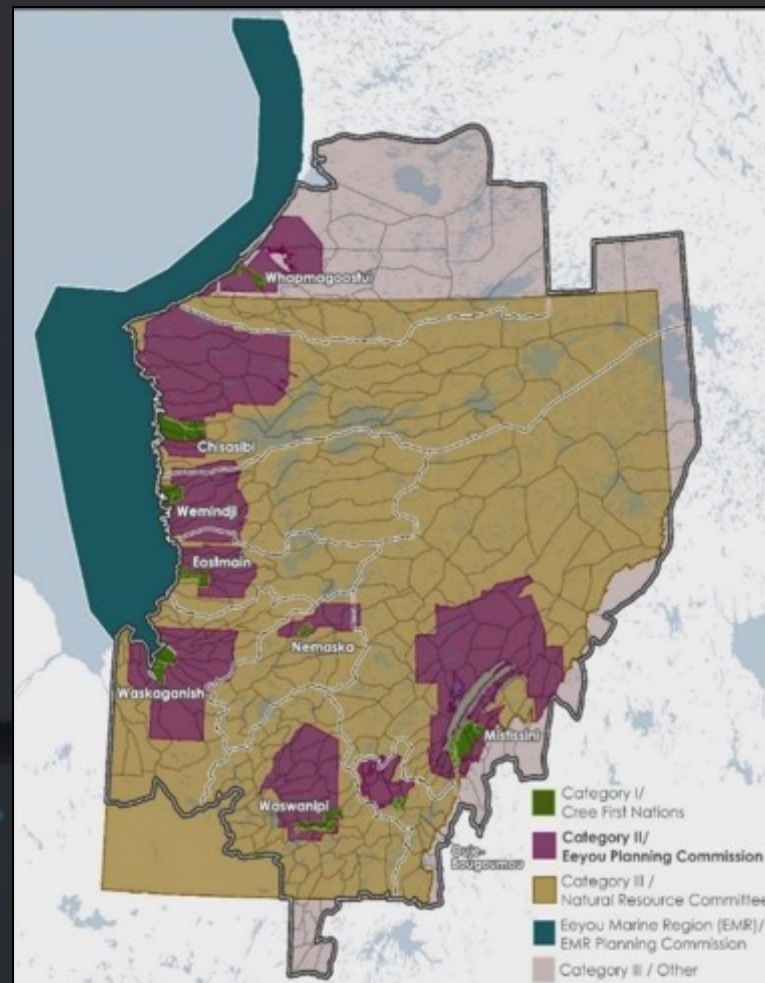


Developing a strong and sustainable Cree economy



ABOUT REGIONAL LAND AND RESOURCE USE PLANNING

2.3 PLANNING JURISDICTIONS IN EYYOU ISTCHEE

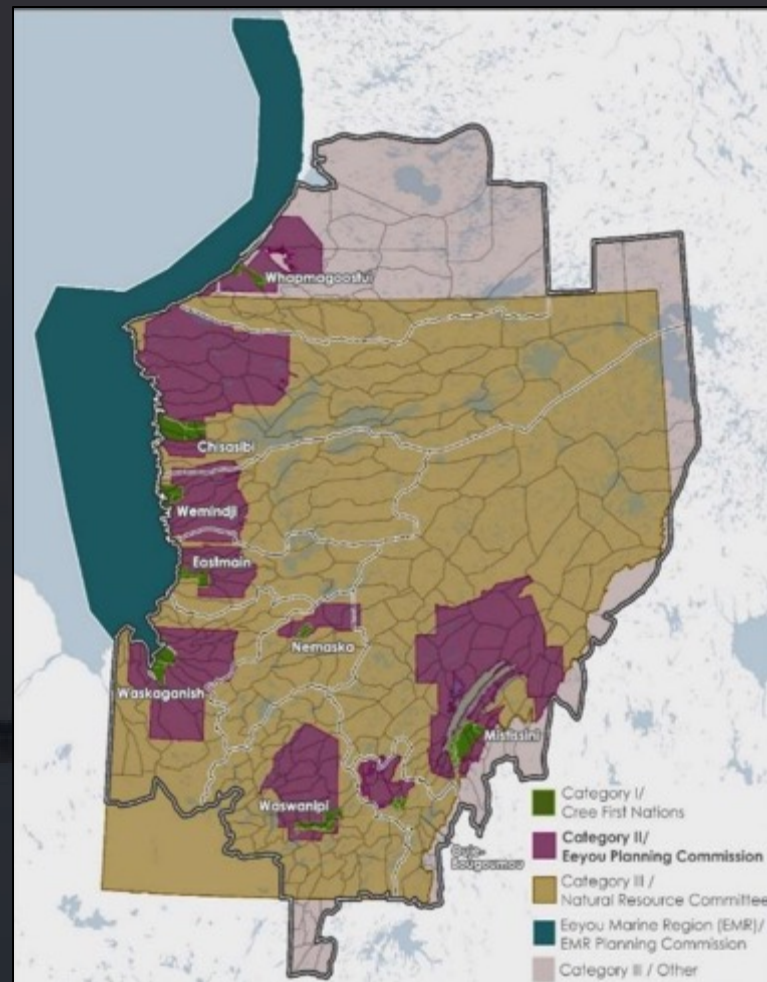


ABOUT REGIONAL LAND AND RESOURCE USE PLANNING

2.3 PLANNING JURISDICTIONS IN EYYOU ISTCHEE



There are a lot of planning entities and jurisdictions, but remember the main mandates of EPC ?



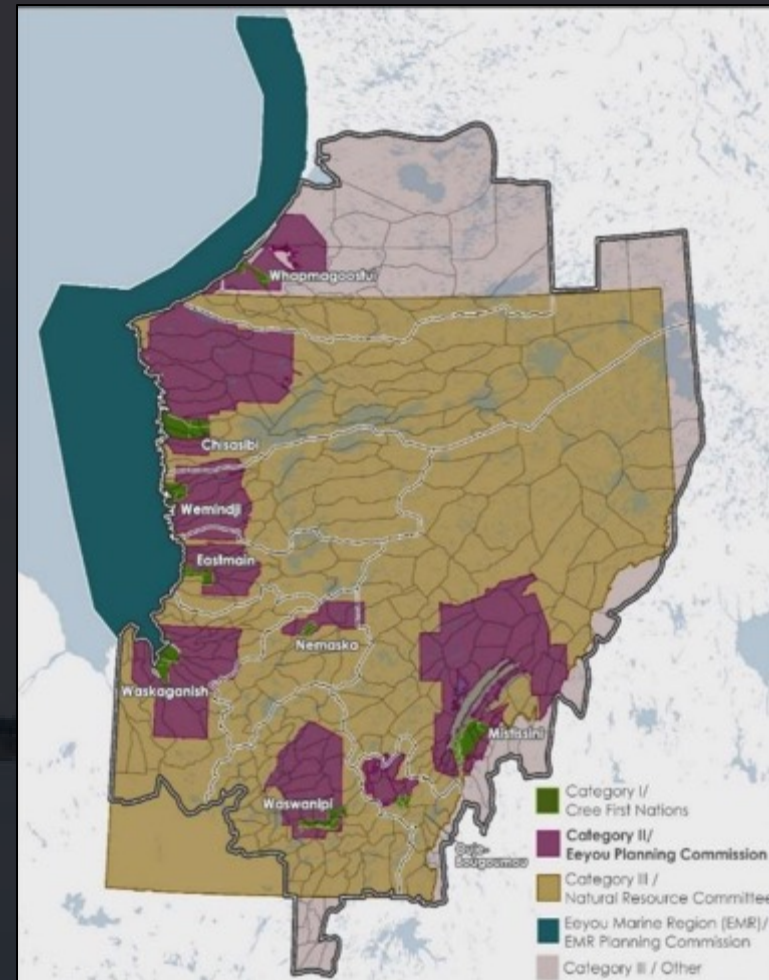
ABOUT REGIONAL LAND AND RESOURCE USE PLANNING

2.3 PLANNING JURISDICTIONS IN EYYOU ISTCHEE



The EPC works with regional planning partners to ensure that:

- » the different regional plans work together
- » they reflect the collective vision, interests, and aspirations of the Crees





MAIN WORK OF THE EPC SO FAR

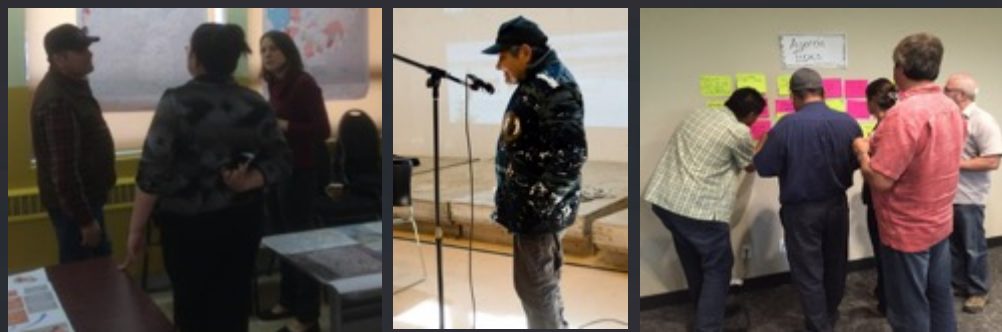
3.1 COMMUNITY CONSULTATIONS

From winter to fall 2017:

“Open house” events and discussion on land use planning topics;

Focus groups and interviews with land users, Elders, youth, women, and local government representatives;

Reports on the consultations were produced for each of the Cree communities, along with an all-community summary report (available on the website)



eeyouplanningcommission.ca





MAIN WORK OF THE EPC SO FAR

3.2 MAIN THEMES THAT EMERGED FROM THE CONSULTATIONS

Eeyou Culture and Language

- Cultural programs
- Culture camps

Cree Occupation of the Land

- Condition of the land
- Access to the land
- Cost of accessing and staying on the land
- Transmission of traditional skills

Protection of Environment and Wildlife

- Protection of ecologically sensitive sites
- Protection of culturally sensitive sites
- Protection of wildlife
- Protection of freshwater resources
- Cumulative nature of environmental impacts



MAIN WORK OF THE EPC SO FAR

3.2 MAIN THEMES THAT EMERGED FROM THE CONSULTATIONS



Industrial Development of Natural Resources

- Forestry
- Hydroelectric power generation
- Mining

Regional Economic Activity and Cree Employment

- Participation in regional economic development
- Industrial development on Cree terms
- Economic activities with low environmental impact
- Local employment and returns from development

Governance and Lands Management

- Information, communication and public participation
- Role of Elders and experienced land users
- Tallyman and trapline system
- Management of hunting, trapping and fishing pressure
- Waste management and littering at camps and in communities
- Recreational cabins and hunting and fishing by non-Crees





MAIN WORK OF THE EPC SO FAR

3.3 COMMUNICATION TOOLS

To increase the visibility of our work, the EPC has recently developed new communication tools :

WEBSITE --- www.eeyouplanningcommission.ca



FACEBOOK --- Eeyou Planning Commission

NEWSLETTER



PAMPHLET





4.1 NEXT STEPS FOR 2018-2019

- » **Continue collaboration** with regional land use planning partners
- » **Open dialogue and build relationships** with regional Cree entities
- » **Begin drafting goals and objectives** for the Regional Land and Resource Use Plan



QUESTIONS ?

